



EASTMAN

Basically brilliant
Vanceva® White Collection

White done right

Since ancient times, white has been an important color in architecture. Today, it has become the ideal of modernism. Architects and builders, however, choose white for many reasons. It creates an open and clean sense of space. It is both classic and modern—elegant and simple.

For many, the color white represents purity, peace, and perfection. And now there's a perfect way to accentuate your designs with brilliant and translucent designs: The Vanceva® White Collection of high-performance interlayers for laminated glass.

The right white in every light

For interior and exterior applications alike, Vanceva's white interlayers enable aesthetic designs with the perfect play of light and uniform near opacity—creating private settings that still let light shine in.

Like all Vanceva interlayers, the White Collection provides uniform color that transforms ordinary glass into stylish safety glass that is ideal for:

- Partitions
- Wall claddings
- Whiteboards
- Video presentation screens
- Flooring
- Façades
- Furniture
- Commercial signage
- Interior doors and balconies
- Museums
- Hospitals
- Hotels
- Meeting rooms



Superior performance and versatility

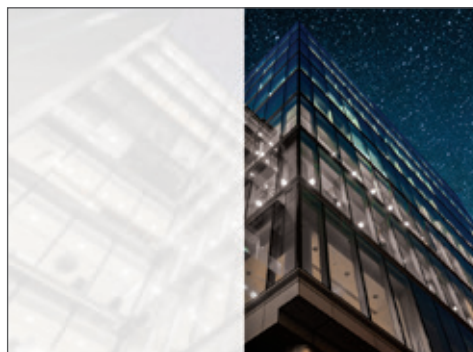
The Vanceva White Collection comes in a wide array of choices, allowing designers and architects to specify the light transmittance, solar absorption, heat gain coefficient, and translucency they need.



Vanceva Cool White (color code: 000A)

Create an appealing translucent look for obscurity or added style. Beautifully translucent Cool White has a high light transmission level (~80%)—allowing light to enter a space while maintaining privacy. You can apply multiple layers to reduce light transmittance even further. Cool White can also be added to other Vanceva color interlayers to achieve a translucent effect in any color.

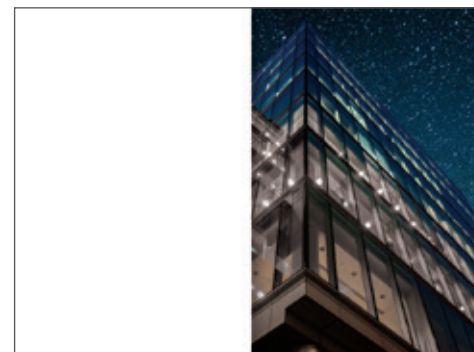
Solar transmittance	67%
Visible light transmittance	81%
Solar absorption	25%
Solar heat gain coefficient	0.75
Shading coefficient	0.86
U-factor (W/m ² ·K)	5.74



Vanceva Arctic Snow (color code: 0009)

With a medium light transmission (~65%), choose Arctic Snow for a comfortable private feel without complete opacity. You can apply multiple layers to reduce light transmittance even further. Like other whites in the Vanceva Collection, Arctic Snow can be added to other Vanceva interlayers to achieve a translucent effect in any color.

Solar transmittance	60%
Visible light transmittance	68%
Solar absorption	33%
Solar heat gain coefficient	0.70
Shading coefficient	0.81
U-factor (W/m ² ·K)	5.74



Vanceva Polar White (color code: 000F)

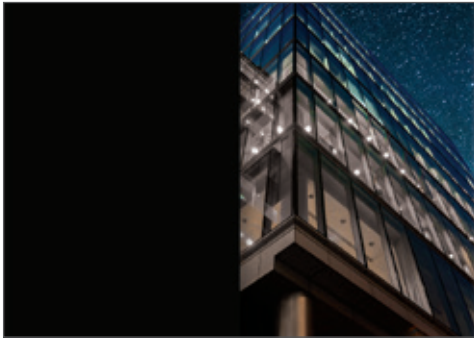
With a low visible light transmittance (~7%), Polar White has superior capability to block visibility while offering color uniformity. Polar White is an ideal product for designers who want a crisp white glazing or those who want to achieve two different colors of glass in a single laminated unit (i.e., white on one side and a nearly opaque color on the other).

Solar transmittance	10%
Visible light transmittance	7%
Solar absorption	46%
Solar heat gain coefficient	0.25
Shading coefficient	0.29
U-factor (W/m ² ·K)	5.74

Translucence and opacity

With Vanceva, achieving the optimal level of translucence or opacity can be a simple matter of black and white. For example, by adding white PVB interlayers to your color mix, you can give your design a beautiful translucence that lets just the right amount of light in.

Conversely, Vanceva Absolute Black interlayer is another option for added opacity. The interlayer has superior, uniform color, and is perfect for two-sided glass when paired with Polar White. Additional colors can be constructed by adding additional layers of color in front of Polar White. These applications are excellent for interior dividers and spandrel applications.



Vanceva Absolute Black (color code: 000G)

With a light transmittance of 0%, Absolute Black has excellent opacity and a uniform colored surface compared to any black glass product on the market. Compared to painted black glass, Absolute Black provides superior aesthetics and visual quality (no pinholes).

Solar transmittance	0%
Visible light transmittance	0%
Solar absorption	95%
Solar heat gain coefficient	0.31
Shading coefficient	0.36
U-factor (W/m ² :K)	5.74

The data and information set forth herein are based on calculations and are not guaranteed for all samples or applications. All data calculated using Lawrence Berkeley Laboratory Window 7 product; NFRC/ASHRAE conditions; center-of-glass values; USD Standard units. Laminates constructed as 3-mm (0.125-in.) clear glass, Saflex® interlayer, and 3-mm (0.125-in.) clear glass. Colored laminate configurations consist of 0.38-mm Saflex interlayer unless noted





Color with confidence

Because Vanceva interlayers are between two pieces of glass, they are easy to maintain and clean. They are made with heat- and light-stable colorants to produce colors that resist fading.

What's more, laminated glass made with Vanceva colored protective interlayers delivers effective protection from UV radiation, screening up to 99% of damaging UV radiation from 300 - 380 nm; reduction of glare, solar energy transmittance, and solar heat gain.

For more information, visit
www.vanceva.com.

Architects and designers trust Saflex® and Vanceva®

Around the world, architects and designers trust Saflex and Vanceva when safety, performance, and comfort are their most critical concerns. The reason for their confidence is simple. No matter what the specifications or performance targets, Saflex interlayer technology delivers advanced glazing performance for demanding applications.

EASTMAN
The results of insight™

Contact Us
vanceva@eastman.com

Although the information and recommendations set forth herein are presented in good faith, Eastman Chemical Company ("Eastman") and its subsidiaries make no representations or warranties as to the completeness or accuracy thereof. You must make your own determination of its suitability and completeness for your own use, for the protection of the environment, and for the health and safety of your employees and purchasers of your products. Nothing contained herein is to be construed as a recommendation to use any product, process, equipment, or formulation in conflict with any patent, and we make no representations or warranties, express or implied, that the use thereof will not infringe any patent. NO REPRESENTATIONS OR WARRANTIES, EITHER EXPRESS OR IMPLIED, OF MERCHANTABILITY, FITNESS FOR A PARTICULAR PURPOSE, OR OF ANY OTHER NATURE ARE MADE HEREUNDER WITH RESPECT TO INFORMATION OR THE PRODUCT TO WHICH INFORMATION REFERS AND NOTHING HEREIN WAIVES ANY OF THE SELLER'S CONDITIONS OF SALE.

Safety Data Sheets providing safety precautions that should be observed when handling and storing our products are available online or by request. You should obtain and review available material safety information before handling our products. If any materials mentioned are not our products, appropriate industrial hygiene and other safety precautions recommended by their manufacturers should be observed.

© 2018 Eastman. Eastman brands referenced herein are trademarks of Eastman or one of its subsidiaries or are being used under license. The ® symbol denotes registered trademark status in the U.S.; marks may also be registered internationally. Non-Eastman brands referenced herein are trademarks of their respective owners.

