



©Eastman

Taipei Performing Arts Center (TPAC), Taiwan

Vanceva™ Earth Tones collection

Incorporate soothing colors into your architectural designs.

When laminated between two sheets of glass, Vanceva interlayers enhance the safety and UV protection in architectural glazing. Now available in an array of natural earth tones, these polyvinyl butyral (PVB) films also bring greater aesthetics, warmth, and serenity to any architectural space.

Traditional methods of making colored glass can be costly, particularly when the volume of colored glass is small. And not all colored glass may be appropriate for building codes and requirements. With Vanceva Earth Tones, architects and designers have an innovative option to expand their creative boundaries and fulfill their vision without sacrificing structural integrity.

Select from a range of 11 earth tones in shades of blue, grey, green, brown, and bronze—colors that are all similar to industry standard glass tints when laminated in clear glass. Vanceva color interlayers allow architects and designers to achieve varying light transmissions without having to vary glass thickness or sacrifice structural performance.

To resist fading, these PVB films are made with heat-and light-stable colorants. As a result, they are ideal for both interior and exterior applications, including balconies, curtain walls, atriums, skylights, partitions, and conference rooms.



Graphite



Shale



Marine



Glacier



Sky



Dusk



Limestone



Dolomite



Truffle



Gobi



Mocha

Key benefits



Breakage protection



Burglary protection



UV protection



Noise reduction

Vanceva Earth Tones product offering

Product	Color	Thickness	Widths/lengths	Form
Vanceva Earth Tones	*	0.38 mm/0.015 in.	*	Refrigerated/interleaved
		0.76 mm/0.030 in.		

*Consult your regional Vanceva representative for availability of colors, widths, lengths, and forms for your region.

Heat and light control characteristics of laminated glass made with Vanceva interlayers

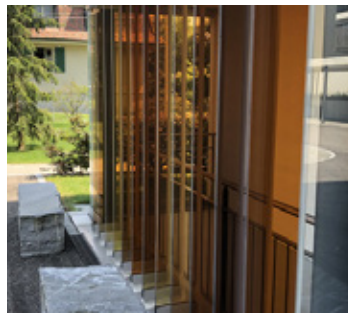
Color name	Code	Thickness	Solar transmittance (%)	Visible light transmittance (%)	Absorptance (solar)	U-factor W/m ² -K	Shading coefficient (SC)	Solar heat gain coefficient (SHGC)	Relative heat gain (RHG) W/m ²	Light-to-solar gain (LSG)
Sky	755800	0.38 mm/0.015 in.	58	54	0.36	5.72	0.79	0.69	539	0.78
Glacier	637600	0.38 mm/0.015 in.	67	74	0.26	5.75	0.86	0.74	580	0.99
Marine	377300	0.38 mm/0.015 in.	64	72	0.30	5.72	0.84	0.73	567	0.98
Marine	377300	0.76 mm/0.030 in.	63	72	0.31	5.68	0.83	0.72	563	1.00
Graphite	654400	0.38 mm/0.015 in.	47	42	0.47	5.73	0.71	0.62	488	0.68
Graphite	654400	0.76 mm/0.030 in.	47	43	0.47	5.68	0.71	0.62	490	0.70
Shale	082800	0.38 mm/0.015 in.	38	30	0.57	5.74	0.64	0.56	444	0.54
Dolomite	645200	0.38 mm/0.015 in.	51	53	0.43	5.74	0.74	0.65	510	0.81
Dolomite	645200	0.76 mm/0.030 in.	50	52	0.45	5.68	0.73	0.64	501	0.81
Limestone	555800	0.38 mm/0.015 in.	53	56	0.42	5.74	0.75	0.66	515	0.85
Dusk	365500	0.38 mm/0.015 in.	52	56	0.43	5.74	0.75	0.65	513	0.85
Mocha	362800	0.38 mm/0.015 in.	32	28	0.63	5.73	0.60	0.52	419	0.55
Gobi	642800	0.38 mm/0.015 in.	34	28	0.61	5.74	0.61	0.53	427	0.53
Truffle	360900	0.38 mm/0.015 in.	15	8	0.81	5.73	0.47	0.41	334	0.21



©Eastman Taipei Performing Arts Center (TPAC), Taiwan



©Eastman Farfa Lima Plaza, Brazil



©Eastman Nußbaumallee, Muri/Bern CH, Germany



The architectural industry trusts Saflex and Vanceva color PVB interlayers.

Since 1937, glass fabricators have counted on Saflex for high-quality products, reliable service, and expert advice to help deliver world-class technology for laminated glass. Eastman architectural glazing products include Saflex PVB interlayers for laminated glass as well as Vanceva color PVB interlayers. Architects and engineers are taking advantage of our products which offer structural performance, over 69,000 colors, acoustic sound reduction, and solar UV protection that provide safety, security, and weight reduction inherent to the PVB when laminated between two pieces of glass.

EASTMAN

Eastman Corporate Headquarters

P.O. Box 431
Kingsport, TN 37662-5280 U.S.A.

U.S.A. and Canada, 800-EASTMAN (800-327-8626)
Other locations, +(1) 423-229-2000

eastman.com/locations

Although the information and recommendations set forth herein are presented in good faith, Eastman Chemical Company ("Eastman") and its subsidiaries make no representations or warranties as to the completeness or accuracy thereof. You must make your own determination of its suitability and completeness for your own use, for the protection of the environment, and for the health and safety of your employees and purchasers of your products. Nothing contained herein is to be construed as a recommendation to use any product, process, equipment, or formulation in conflict with any patent, and we make no representations or warranties, express or implied, that the use thereof will not infringe any patent. NO REPRESENTATIONS OR WARRANTIES, EITHER EXPRESS OR IMPLIED, OF MERCHANTABILITY, FITNESS FOR A PARTICULAR PURPOSE, OR OF ANY OTHER NATURE ARE MADE HEREUNDER WITH RESPECT TO INFORMATION OR THE PRODUCT TO WHICH INFORMATION REFERS AND NOTHING HEREIN WAIVES ANY OF THE SELLER'S CONDITIONS OF SALE.

Safety Data Sheets providing safety precautions that should be observed when handling and storing our products are available online or by request. You should obtain and review available material safety information before handling our products. If any materials mentioned are not our products, appropriate industrial hygiene and other safety precautions recommended by their manufacturers should be observed.

© 2023 Eastman. Eastman brands referenced herein are trademarks of Eastman or one of its subsidiaries or are being used under license. Non-Eastman brands referenced herein are trademarks of their respective owners.